

Friday April 18th



FOUR LANES MALE CHOIR

Recognised throughout Cornwall, as well as many parts of England and Wales, and a handful of European countries, Four Lanes Male Choir has one of the highest reputations for male voice singing.
www.fourlanesmalechoir.co.uk

Members £8 Non-Members £11 Students £4

Friday May 16th
Countess of Munster sponsored concert



ELEN HYDREF

(harp)

“A simple, effective, haunting structure of sculptural beauty brought to life in sound and movement by harpist Elen Hydref... ..If you ever get a chance to hear Elen Hydref live, cancel whatever else you might have on and go.”

The British Theatre Guide
www.elenhdref.com



Members £9 Non-Members £12 Students £4.50

Friday June 27th



GREAT WESTERN JAZZ COMPANY

The Great Western Jazz Company draws upon the Classic American Songbook, as well as popular Dixieland and small band swing numbers, for its repertoire.
www.greatwesternjazzco.co.uk

Members £8 Non-Members £11 Students £4

Saturday July 26th

DUO DIEZ

(violin & guitar)

“...played with conviction and passion.. “

R.Deakin

“ ..displayed a high level of maturity with beautifully shaped phrases.”

R.Manning

www.violetaviolin.com/content/violinguitar-duo-diez



Members £9 Non-Members £12 Students £4.50

Saturday August 16th



FRESHLY GROUND

Freshly Ground combines the talent and experience of some of the South West's best known folk singers, who've come together to

sing traditional English songs in glorious harmony.
www.issyemeney.co.uk/Issy/Freshly_Ground.html

Members £8 Non-Members £11 Students £4

Friday September 12th 6.30 p.m.

Annual General Meeting

followed at 7.30 p.m. by

AMY GREEN (saxophone)

DANIEL KING SMITH

(piano)

A young saxophonist from Northamptonshire who has enjoyed many years playing with the County Youth Music Groups performing at venues including the Royal Palace in Madrid, the Royal Albert Hall and Birmingham Symphony Hall.



Members £9 Non-Members £12 Students £4.50

ROSELAND MUSIC SOCIETY



Programme Season 2013/14



Leaflet kindly sponsored by



www.roselandmusicsociety.org.uk



All Concerts in Portscatho Memorial Hall
at 7.30 pm, unless otherwise stated.

Tickets for all concerts can be purchased on the
door

Membership Form Season 2013/14

Membership, due in September for the coming season, is £10 per person and is valid up to and including the A.G.M. in September 2014. Current members are aware that due to a fall off in attendance at concerts there was a significant financial shortfall for the financial year just ended. Such a drain on finances cannot be sustained. Traditionally members have been most generous in supporting ROSELAND YOUTH MUSIC with donations (Gift Aided as applicable). Presently funds to sustain this important part of RMS activities are sufficient to support our immediate Workshop Programme and our continuing sponsorship of suitable Youth Projects where our support can make the difference for them to become viable. You are invited therefore to donate this year to ROSELAND MUSIC SOCIETY instead to help ensure that the future of the Society is secured for 2015 and beyond. Thank you in anticipation of your continued support.

Name/s.....
Address.....

Subscription £.....
Donation to RMS £.....
Total £.....
Gift Aid Yes / No

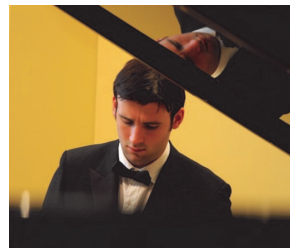
Email for programme news.....
Tel/fax. no.

Data Protection Act 1998. I, the undersigned, hereby consent to the processing of personal data and information supplied on this form and in consequence of my membership, and solely to its use by the Roseland Music Society in its communication with its Members.

Signed..... Date.....

Please send your cheque and completed application to the Membership Secretary, Anne Shoraka, 2 Bre Wartha, Grampond Road, Truro TR2 4BU making your cheque payable to Roseland Music Society. Thank you.

Friday November 22nd
JOHN PAUL EKINS
(piano)
Mozart - Fantasy in C Minor
Schubert - Impromptus
Britten - Holiday Diary
Liszt - Cantique d'Amour
Beethoven - Waldstein Sonata
Featured in Making Music 'Bright Young Things'
www.jpkinspianist.com



Members £9 Non-Members £12 Students £4.50



Friday October 18th
FENELLA HUMPHREYS
(violin)
SAM HAYWOOD
(piano)
Including sonatas by Mozart & Beethoven
“.....captures the music's wistful cantabile to perfection, producing a golden tone in all registers with the utmost sensitivity”
The Strad Magazine
www.fenellahumphreys.com
Members £9 Non-Members £12 Students £4.50

ROSALIND VENTRIS
(viola)
DANIEL TONG
(piano)
Bach - Cello Suite No. 5
Schubert - Arpeggione Sonata
Britten - Lachrymae
Clarke - Sonata
www.rosalindventris.com
Members £9 Non-Members £12 Students £4.50



Friday September 20th 6.30 p.m.
Annual General Meeting
followed at 7.30 p.m. (doors open 7.10) by
Countess of Munster sponsored concert



Saturday March 15th
JACQUIN TRIO
Winners of the St Martin-in-the-Fields Chamber Music Competition 2012 and finalists of the Royal Overseas League Competition.
www.jacquintrio.com
Members £9 Non-Members £12 Students £4.50



Friday February 14th
ROSANNA TER-BERG
(flute)
LEO NICHOLSON
(piano)
“a big sound and a personality to match”
The Telegraph
“...rapport was exemplary, and they also captured the wit and warmth...”
The Times
Recipient of the Making Music Philip and Dorothy Green Award
www.rosannater-berg.co.uk
Members £9 Non-Members £12 Students £4.50



Friday January 24th 2014
PIATTI QUARTET
“The prize for poise, blended tone and general lustre was ultimately won by the Piatti String Quartet”
The Times
“Musically compelling...”
The Strad
www.piattiquartet.com
Members £10 Non-Members £13 Students £5



Children of 16 and under admitted free when with a ticket holding Adult
Registered Charity 1098140