

Friday March 2<sup>nd</sup>  
**THORNE TRIO**



This well established and highly acclaimed Ladies Wind Trio were visitors to the Roseland in 2015 attracting a large audience and becoming firm favourites. They return by popular demand. They enjoy a friendly empathy with the audience. Featuring a varied programme ranging from Handel, Beethoven and Mozart to Ibert, Elgar and McDowell another hugely enjoyable evening is eagerly anticipated.

[thethornetrio.co.uk](http://thethornetrio.co.uk)

Members £10 Non-Members £13 Students £5

Friday May 11<sup>th</sup>

**ANDREY LEBEDEV** (guitar)

Born in Russia and brought up in Australia, Andrey is emerging as one of the most successful young guitarists of his generation. His achievements and awards are numerous. His repertoire is broad and varied and includes compositions of his own. His programme will include works by Bach and Villa-Lobos.



[andreylebedev.com](http://andreylebedev.com)

Members £9 Non-Members £12 Students £4.50

Sponsored by the Countess of Munster Trust

Friday June 29<sup>th</sup>  
**PELLÉAS ENSEMBLE**



Established eight years ago by three brilliant young artists at the Guildhall School of Music the Ensemble have won many awards and forged an enviable reputation arising from their many recitals and the friendly rapport with their listeners. A wonderful programme featuring Bach, Corelli, Debussy and Saint-Saens. Each of the three artists is also building a successful solo career.

[pelleasensemble.co.uk](http://pelleasensemble.co.uk)

Members £10 Non-members £13 Students £5

Supported by  
The Tillett Trust Young Artists' Platform

TICKETS FOR ALL CONCERTS CAN BE  
OBTAINED AS FOLLOWS



Cornish Riviera  
Box Office  
01726 879 500  
[crbo.co.uk/rms](http://crbo.co.uk/rms)

Or in person at  
Tourist Offices  
in Truro,  
St Mawes,  
Bodmin  
& St Austell.

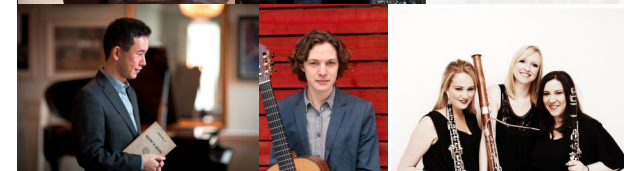
By telephone from Janet Axworthy  
01872 580610

Children of 16 and under admitted free when  
with a ticket holding adult

Registered Charity 1098140



# ROSELAND MUSIC SOCIETY



## Season 2017/18

All Concerts in  
The Memorial Hall, Portscatho  
at 7.30 pm, unless otherwise stated.

Leaflet kindly sponsored by

**H Tiddy**

[www.roselandmusicsociety.org.uk](http://www.roselandmusicsociety.org.uk)

## MEMBERSHIP FORM SEASON 2017/18

You are invited to renew Membership which remains at a modest £10 per person. This is due before the first concert. NEW MEMBERS ARE MOST WELCOME.

**ROSELAND YOUTH MUSIC (RYM)** is the education section of the Music Society. It aims to place musicians performing for the Society into local schools, enabling children to see and hear professional musicians and to learn about different musical instruments, styles and genres. Schools contribute to the cost of these visits but the majority of the finance is provided through the generosity of R.M.S. members. If you would like to support R.Y.M., include it with your subscription. It is a further help if you can gift aid your donation. THANK YOU.

Name/s .....  
Address .....  
Email for programme news .....

Subscription £ .....  
Donation to RYM £ .....  
Total £ .....  
Gift Aid Yes / No .....  
Tel/fax. no. ....

Data Protection Act 1998. I, the undersigned, hereby consent to the processing of personal data and information supplied on this form and in consequence of my membership, and solely to its use by the Roseland Music Society in its communication with its Members.

Signed .....

Please send your cheque and completed application to the Membership Secretary, Denise Deighton, 38 Parc-an-Dillion Road, Portscatho, Truro TR2 5DU making your cheque payable to Roseland Music Society. Thank you.

Date .....

.....

Friday September 29<sup>th</sup>

### HIROAKI TAKENOCHI (piano)



Hiroaki played for the Society in 2008 and 2010. His return to the Roseland is eagerly anticipated and includes works by Mozart, Schumann, Mackenzie and Rachmaninov.

This concert will be preceded by the AGM at 6.45pm.

[tashmina.co.uk/instrumentalists/hiroaki-takenouchi](http://tashmina.co.uk/instrumentalists/hiroaki-takenouchi)

**Members £10 Non-Members £13 Students £5**

Friday November 10<sup>th</sup>

### YOANNA PRODANOVA (cello) ROSIE RICHARDSON (piano)



Cellists have proved popular at our concerts and Yoanna will be no exception. She has studied in Canada, America and currently is at the Guildhall School of



Music and Drama. Performances have taken place throughout the UK, Europe and Canada. This concert will include works by Schumann, Chopin, Britten and leading 20th century Polish composer Lutoslawski. Yoanna will be accompanied by the acclaimed and experienced Rosie Richardson.

[yoannaprodanova.com](http://yoannaprodanova.com)

**Members £9 Non-Members £12 Students £4.50**

**Sponsored by Making Music Philip and Dorothy Green Award**

Friday December 1<sup>st</sup>

### ROSANNA TER-BERG (flute) LEO NICHOLSON (piano)

Rosanna Ter-Berg's striking performances have led her to be described as 'super-charged' with 'unstinting virtuosity and personality'. Roseanna and Leo were due to play during February 2014, but sadly the weather decreed otherwise. It has



taken some time to rearrange a visit but at last we can enjoy this highly rated pair. A varied and interesting programme with a French flavour has something for everyone.

[rosannater-berg.co.uk](http://rosannater-berg.co.uk)

**Members £10 Non-Members £13 Students £5**

Friday January 19<sup>th</sup> 2018

### EIGHT IN A BAR



This multi award winning and popular Cornish Singing Group needs no introduction. They were placed second equal in the under 40 voices class in the 2013 Cornish

International Male Voice Choir Festival and adjudged best overall Cornish Choir.

At a previous visit to the Music Society they attracted a large audience and were highly rated.

[eightinabar.co.uk](http://eightinabar.co.uk)

**Members £8 Non-Members £11 Students £4**